

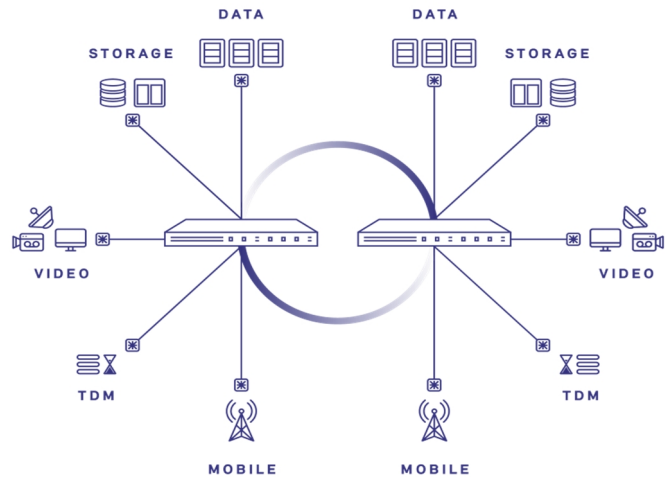
Optical Infrastructure Solutions

Overview

The Itectra Optical Infrastructure Solutions builds upon high-density WDM systems, optical transceivers and accessories designed to provide optical network support for high-speed data Ethernet and Fiber Channel communication.

These WDM systems and optical transceivers deliver capacity from 1 Gbps to 800 Gbps per wavelength suitable for datacenter, enterprises, and service provider networks.

In addition to WDM systems and optical transceivers the Itectra portfolio spans across long-haul active DWDM systems, MPO cassettes, inspection and cleaning equipment.



Product Features

- Active DWDM systems
- Passive CWDM and DWDM systems
- 1/10/25/40/50/100/200 GbE transceivers
- 8/16/32Gb FC transceivers
- Direct Attach Cables (DAC)
- Active Optical Cables (AOC)
- MPO cassettes
- Inspection and cleaning equipment

Applications

- Datacentre
- Enterprise
- Core/Metro/Access
- FTTX
- Mobile Fronthaul

Supported by leading vendors

The Itectra Optical Infrastructure portfolio includes a variety of today's leading optical network vendors; Infinera, Skylane Optics, Viavi, Corning and Sticklers. Please consult Itectra for further information on specific products and solutions.

Compatibility

Itectra offers a wide range of compatible solutions allowing full network operational capabilities across the network. All equipment and modules are fully compliant with the relevant standards and recommendations and are manufactured utilizing the highest quality components available.

CWDM Systems



Chassis:	43 × 432 × 248 mm (H×W×D)	LGX:	43 × 180 × 178 mm (H×W×D)
Rec.:	CWDM (ITU-T G.694.2)	Temp., Operation:	-5 – 70°C
Connector:	LC / UPC	Temp., Storage:	-40 – 85°C
Other connectors upon request		Humidity:	5 – 85%

Product	Channels	Link loss (channels)	Link loss (ext)	Remarks	Product Number
Chassis					
Chassis for LGX, 1U, 2 slots					WDM-CHASSIS
Blindplate for LGX slot					WDM-BLINDPLATE
CWDM MUX/DEMUX					
4ch. CWDM Mux/Demux	C27 – C33	~2.6dB per pair	~3.2dB per pair	TFF, Ext port for other channels	CW-MDU5-27-LU
4ch. CWDM Mux/Demux	C35 – C37 / C43 – C47	~2.6dB per pair	~3.2dB per pair	TFF, Ext port for other channels	CW-MDU5-33-LU
4ch. CWDM Mux/Demux	C47 – C53	~2.6dB per pair	~3.2dB per pair	TFF, Ext port for other channels	CW-MDU5-47-LU
4ch. CWDM Mux/Demux	C55 – C61	~2.6dB per pair	~3.2dB per pair	TFF, Ext port for other channels	CW-MDU5-55-LU
8ch. CWDM Mux/Demux	C47 – C61	~3.8dB per pair	~5.6dB per pair	TFF, Ext port (1271-1451)	CW-MDU9-47-LU
8ch. CWDM Mux/Demux	C27 – C37 / C43 – C45	~3.8dB per pair		TFF, Extension module	CW-MDU8-27-EM-LU
16ch. CWDM Mux/Demux	C27 – C37 / C43 – C61	~4.7dB per pair		TFF	CW-MDU16-27-LU
4ch. CWDM Mux/Demux	C27 – C33	~2.4dB per pair	~2.4dB per pair	CCWDM, Ext port for other channels	CCW-MDU5-27-LU
4ch. CWDM Mux/Demux	C35 – C37 / C43 – C47	~2.4dB per pair	~2.4dB per pair	CCWDM, Ext port for other channels	CCW-MDU5-33-LU
4ch. CWDM Mux/Demux	C47 – C53	~2.4dB per pair	~2.4dB per pair	CCWDM, Ext port for other channels	CCW-MDU5-47-LU
4ch. CWDM Mux/Demux	C55 – C61	~2.4dB per pair	~2.4dB per pair	CCWDM, Ext port for other channels	CCW-MDU5-55-LU
8ch. CWDM Mux/Demux	C47 – C61	~3.0dB per pair	~3.0dB per pair	CCWDM, Ext port (1271-1451)	CCW-MDU9-47-LU
8ch. CWDM Mux/Demux	C27 – C45 / C43 – C45	~3.0dB per pair		CCWDM, Extension module	CCW-MDU8-27-EM-LU
16ch. CWDM Mux/Demux	C27 – C37 / C43 – C61	~5.4dB per pair		CCWDM	CCW-MDU16-27-LU
CWDM OADM					
1ch. CWDM OADM	Cxx	Tx/Rx: 0.8dB each	Transit: 1.0dB	TFF, East + West	CW-OADM1-xx-LU
2ch. CWDM OADM	Cxx – Cxx+1	Tx/Rx: 1.5dB / 0.8dB	Transit: 1.5dB	TFF, East + West	CW-OADM2-xx-LU
4ch. CWDM OADM	Cxx – Cxx+3	Tx/Rx: 1.9dB / 0.8dB	Transit: 2.7dB	TFF, East + West	CW-OADM4-xx-LU

Please consult Itectra for specific customer requests

Specifications are subject to change without notice.

CATV + CWDM Systems



Chassis:	43 × 432 × 248 mm (H×W×D)	LGX:	43 × 180 × 178 mm (H×W×D)
Rec.:	CWDM (ITU-T G.694.2)	Temp., Operation:	-10 – 70°C
Connector:	LC / UPC	Temp., Storage:	-40 – 85°C
Other connectors upon request		Humidity:	5 – 85%

Product	Channels	Link loss (channels)	Link loss (ext)	Remarks	Product Number
Chassis					
Chassis for LGX, 1U, 2 slots					WDM-CHASSIS
Blindplate for LGX slot					WDM-BLINDPLATE
CWDM + CATV MUX/DEMUX					
2ch. CWDM Mux/Demux	¹ 59/61 + CATV	CWDM: ~2.2dB per pair CATV: ~3.2dB per pair	~2.6dB per pair	TFF, Ext port (1271-1451) LC/APC: line + CATV	CW-MDU4-59- CA-LU
5ch. CWDM Mux/Demux	¹ 47-53/59/61 + CATV	CWDM: ~3.2dB per pair CATV: ~4.8dB per pair	~4.4dB per pair	TFF, Ext port (1271-1451) LC/APC: line + CATV	CW-MDU7-47- CA-LU
2ch. CWDM Mux/Demux	¹ 59/61 + CATV	CWDM: ~2.2dB per pair CATV: ~3.2dB per pair	~2.6dB per pair	TFF, Ext port (1271-1451) LC/APC: all connectors	CW-MDU4-59- CA-LA
5ch. CWDM Mux/Demux	¹ 47-53/59/61 + CATV	CWDM: ~3.2dB per pair CATV: ~4.8dB per	~4.4dB per pair	TFF, Ext port (1271-1451) LC/APC: all connectors	CW-MDU7-47- CA-LA
3ch. CWDM Mux/Demux	² 57/59/61 + CATV	CWDM: ~2.6dB per pair CATV: ~3.6dB per pair	~3.2dB per pair	TFF, Ext port (1271-1451) LC/APC: line + CATV	CW-MDU5-57- CN-LU
7ch. CWDM Mux/Demux	² 47-53/57-61 + CATV	CWDM: ~3.2dB per pair CATV: ~4.8dB per pair	~4.4dB per pair	TFF, Ext port (1271-1451) LC/APC: line + CATV	CW-MDU9-47- CN-LU
3ch. CWDM Mux/Demux	² 57/59/61 + CATV	CWDM: ~2.6dB per pair CATV: ~3.6dB per pair	~3.2dB per pair	TFF, Ext port (1271-1451) LC/APC: all connectors	CW-MDU5-57- CN-LA
7ch. CWDM Mux/Demux	² 47-53/57-61 + CATV	CWDM: ~3.2dB per pair CATV: ~4.8dB per pair	~4.4dB per pair	TFF, Ext port (1271-1451) LC/APC: all connectors	CW-MDU9-47- CN-LA
3ch. CCWDM Mux/Demux	² 57/59/61 + CATV	CWDM: ~2.4dB per pair CATV: ~2.4dB per pair	~2.4dB per pair	CCWDM, Ext port (1271-1451) LC/APC: line + CATV	CCW-MDU5-57- CN-LU
7ch. CCWDM Mux/Demux	² 47-53/57-61 + CATV	CWDM: ~3.0dB per pair CATV: ~3.0dB per pair	~3.0dB per pair	CCWDM, Ext port (1271-1451) LC/APC: line + CATV	CCW-MDU9-47- CN-LU
3ch. CCWDM Mux/Demux	² 57/59/61 + CATV	CWDM: ~2.4dB per pair CATV: ~2.4dB per pair	~2.4dB per pair	CCWDM, Ext port (1271-1451) LC/APC: all connectors	CCW-MDU5-57- CN-LA
7ch. CCWDM Mux/Demux	² 47-53/57-61 + CATV	CWDM: ~3.0dB per pair CATV: ~3.0dB per pair	~3.0dB per pair	CCWDM, Ext port (1271-1451) LC/APC: all connectors	CCW-MDU9-47- CN-LA
CWDM + CATV OADM					
1ch. CWDM OADM	¹ Cxx + CATV	Tx/Rx: 1.2dB each	Transit: 1.6dB	East + West LC/APC: line + CATV	CW-OADM1-xx-CA-LU
2ch. DWDM OADM	¹ Cxx-Cxx+1 + CATV	Tx/Rx: 1.5dB each	Transit: 2.0dB	East + West LC/APC: line + CATV	CW-OADM2-xx-CA-LU
1ch. CWDM OADM	¹ Cxx + CATV	Tx/Rx: 1.2dB each	Transit: 1.6dB	East + West LC/APC: All connectors	CW-OADM1-xx-CA-LA
2ch. DWDM OADM	¹ Cxx-Cxx+1 + CATV	Tx/Rx: 1.5dB each	Transit: 2.0dB	East + West LC/APC: All connectors	CW-OADM2-xx-CA-LA

¹: CATV port: 1540 nm – 1560 nm

²: CATV port: 1544.5 nm – 1557.5 nm (CWDM channel 1551)

Please consult Itectra for specific customer requests

Specifications are subject to change without notice.

DWDM Systems



Chassis: 43 × 432 × 248 mm (H×W×D)
 Rec.: DWDM (ITU-T G.694.1), 100GHz
 Connector: LC / UPC
 Other connectors upon request

LGX: 43 × 180 × 178 mm (H×W×D)
 Temp., Operation: -5 – 70°C
 Temp., Storage: -40 – 85°C
 Humidity: 5 – 85%

Product	Channels	Link loss (channels)	Link loss (ext)	Remarks	Product Number
Chassis					
Chassis for LGX, 1U, 2 slots					WDM-CHASSIS
Blindplate for LGX slot					WDM-BLINDPLATE

DWDM MUX/DEMUX					
8ch. DWDM Mux/Demux	D30-37	~4.0dB per pair		Through CWDM 1531nm port	DW-MDU8-30-53-LU
8ch. DWDM Mux/Demux	D54-61	~4.0dB per pair		Through CWDM 1551nm port	DW-MDU8-53-53-LU
8ch. DWDM Mux/Demux	D19-26	~4.0dB per pair	~5.4dB per pair	TFF, ext port	DW-MDU9-19-LU
8ch. DWDM Mux/Demux	D27-34	~4.0dB per pair	~5.4dB per pair	TFF,ext port	DW-MDU9-27-LU
8ch. DWDM Mux/Demux	D35-42	~4.0dB per pair	~5.4dB per pair	TFF,ext port	DW-MDU9-35-LU
8ch. DWDM Mux/Demux	D43-50	~4.0dB per pair	~5.4dB per pair	TFF,ext port	DW-MDU9-43-LU
8ch. DWDM Mux/Demux	D51-58	~4.0dB per pair	~5.4dB per pair	TFF,ext port	DW-MDU9-51-LU
16ch. DWDM Mux/Demux	D20-35	~5.6dB per pair		TFF	DW-MDU16-20-LU
16ch. DWDM Mux/Demux	D36-51	~5.6dB per pair		TFF	DW-MDU16-36-LU
32ch. DWDM Mux/Demux	D20-51	~6.0dB per pair		TFF	DW-MDU32-20-LU
44ch. DWDM Mux/Demux	Dxx-xx	~7.0dB per pair		TFF	DW-MDU44-19-LU
32ch. DWDM Mux+Demux	D20-51	~9.0B per pair		AWG	DWA-MDU32-20-LU
44ch. DWDM Mux+Demux	Dxx-xx	~9.6dB per pair		AWG	DWA-MDU44-19-LU
8ch. DWDM Mux/Demux	¹ D51-58	~4.2dB per pair	~2.0dB per pair	TFF, 1×40G/100G port	DW-MDU9-51-EP-LU
16ch. DWDM Mux/Demux	¹ D43-58	~5.6dB per pair	~2.4dB per pair	TFF, 1×40G/100G port	DW-MDU17-43-EP-LU
40ch. DWDM Mux/Demux	¹ D19-58	~12dB per pair	~4,6dB per pair	TFF, 1×40G/100G port	DW-MDU41-19-EP-LU

DWDM OADM					
1ch. DWDM OADM	Dxx	Tx/Rx: 1.0dB each	Transit: 1.0dB	East + West	DW-OADM1-xx-LU
2ch. DWDM OADM	Dxx-Dxx+1	Tx/Rx: 1.4dB each	Transit: 1.8dB	East + West	DW-OADM2-xx-LU
4ch. DWDM OADM	Dxx-Dxx+3	Tx/Rx: 2.2dB each	Transit: 3.2dB	East + West	DW-OADM4-xx-LU

¹: 40GbE/100GbE port: 1271 nm – 1331 nm

Please consult Itectra for specific customer requests

Specifications are subject to change without notice.

About Ipectra

Since 2008 Ipectra has designed, delivered, and serviced business-critical IT infrastructure for Danish datacentres, public companies, enterprises, and service provider networks. Ipectra is specialized in the optical domain with focus on delivery of optical components, WDM systems and consultancy based on a solid knowledge of optical networks, physical optical behaviour, and future evolution of the optical market.

Ipectra has gained the Danish Børsen Gazelle Award in three continuous years (2016 – 2018) and has successively been Bisnode Triple-A rated since 2014.

This success is founded in a close cooperation with our customers and a deep professional understanding of their infrastructure challenges and needs. We follow the technology closely and ensure that our customers can benefit from the latest technologies with the most suitable solution.

Quality in all aspects

Ipectra aims for the highest quality in all aspects from optical network design to the selection of vendors and components to each specific project. All Ipectras vendors are carefully selected among the leaders in the optical world and have all the same clear view on “Quality in all aspects” as Ipectra.

Service and Support

Ipectra offers a selection of service and support options to secure operational efficiency and resolve critical problems smoothly and with minimum impact on the operational infrastructure. To accommodate this Ipectra offers different services from Advanced Hardware Replacement to four hours SLA and Professional Deployment Services from selected vendors.

Contacts

Ipectra A/S
Sofiendalsvej 85
9200 Aalborg SV
Phone: +45 7217 0058
info@itectra.com
www.itectra.com